

Trombone

Concert Band Auditions 2018-2019 School Year Audition Information

All students entering Brea Junior High School for the 2018-19 school year who have musical experience are welcome to audition for BJH's top instrumental group, Concert Band. The Concert Band represents the most skilled musicians at the school and students involved will participate in many concerts, competitions, and other events throughout the school year. **Auditions will take place Monday, June 4, Tuesday, June 5, and Thursday, June 7 in the music room at Brea Junior High. Auditions will begin at 3:10 and will take place every 10 minutes until 4:50. To schedule an audition, please email Mrs. Bartell at gbartell@bousd.us no later than Friday, June 1.** Students who are accepted into the Concert Band will be informed no later than one week later than the audition, and names of students will be sent to the counselors so they can be placed in Concert Band rather than Intermediate Band. No schedule changes should be necessary in the beginning of the school year.

The required audition music consists of:

- Attached prepared piece
- Chromatic scale **in as wide a range as possible.**
- Scales to be chosen from Concert Bb, Eb, Ab, F, C, G major- see attached scale sheet (two will be chosen from these six at random, so be prepared for any of them). One octave is required; multiple octaves are optional but recommended where possible.
- Short sight-reading excerpt (no longer than 16 measures).

Please remember that it is impossible for every student to be accepted into Concert Band. The majority of the students that make up the class are usually eighth graders, though each year it includes several very talented seventh graders as well. **All students will be placed in the class in which they will learn the most and in which they will contribute most to the band.**

Students who are willing to switch to a less common instrument, such as French horn, oboe, bassoon, baritone, or tuba may have a better probability of being accepted to Concert Band, as we usually have overloads of instruments such as flutes and saxophones. Please contact Mrs. Bartell if you are willing to take the time to learn a new instrument. However, an audition on the student's primary instrument will still be required before any decisions are made.

In all cases, private lessons are strongly recommended for students to progress rapidly on their instruments. Contact Mrs. Bartell for more information regarding private tutors or recommendations.

Questions? Comments? Contact Glenda Bartell at (714) 990-7500 ext. 214 OR by email at gbartell@bousd.us.

I'm looking forward to having you in band next year! Good luck on your audition!

Trombone/Euphonium *BJH Concert Band*

Even-Year Audition Material

Theme and variations 1-3 required, 4-5 bonus!

BJ Brooks
ASCAP

Moderato ♩=80 (suggested)
Theme

mf

8 Variation 1

13 Variation 2

f *>* *mf*

18 Variation 3

f *mp*

22

mf *p*

26 Variation 4

mp

30 Variation 5

35


Fbone

One Octave Scales & Arpeggios

In All Twelve Major Key Signatures


Required
Scales
Circled

B \flat  Musical staff for the B-flat major scale in bass clef, starting on B-flat. The scale is circled.

F  Musical staff for the F major scale in bass clef, starting on F. The scale is circled.

C  Musical staff for the C major scale in bass clef, starting on C. The scale is circled.

G  Musical staff for the G major scale in bass clef, starting on G. The scale is circled.

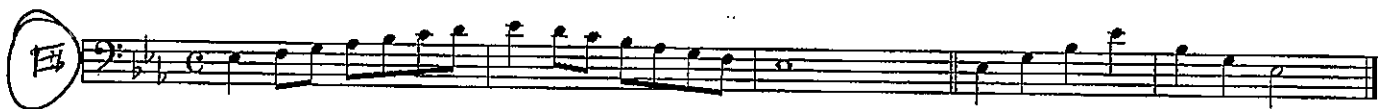
D  Musical staff for the D major scale in bass clef, starting on D.

A  Musical staff for the A major scale in bass clef, starting on A.

E  Musical staff for the E major scale in bass clef, starting on E.

B  Musical staff for the B major scale in bass clef, starting on B.

F \sharp  Musical staff for the F-sharp major scale in bass clef, starting on F-sharp.



Chromatic Exercises



Bb Chromatic Scale



F Chromatic Scale



Full Range Major Scales

Bonus!

Bb Major

Arpeggio

1

Bb Major - BONUS

1a

Arpeggio

Eb Major

Arpeggio

2

Ab Major

Arpeggio

3

Ab Major - BONUS

3a

Arpeggio

Concert Db Major

Arpeggio

4

C# Major - enharmonic to Db Major

Arpeggio

4a

Gb Major

Arpeggio

5

Gb Major BONUS

5a

Arpeggio

F# Major - enharmonic to Gb Major

5b

Arpeggio
3

F# Major - enharmonic to Gb Major - BONUS

5c

Arpeggio

B Major

6

Arpeggio
3

E Major

7

Arpeggio

A Major

8

Arpeggio
3

A Major - BONUS

8a

Arpeggio

D Major

9

Arpeggio
3

G Major

10

Arpeggio
3

G Major - BONUS

10a

Arpeggio
3 3 3

C Major

11 Arpeggio
3 3

F Major

12

Arpeggio
3 3 3

Bb Chromatic Scale - One Octave

13 3 3 3 3 3

Chromatic Scale - Full Range

14

Chromatic Scale - Extended Full Range - BONUS

14a