

F Horn

Concert Band Auditions 2018-2019 School Year Audition Information

All students entering Brea Junior High School for the 2018-19 school year who have musical experience are welcome to audition for BJH's top instrumental group, Concert Band. The Concert Band represents the most skilled musicians at the school and students involved will participate in many concerts, competitions, and other events throughout the school year. **Auditions will take place Monday, June 4, Tuesday, June 5, and Thursday, June 7 in the music room at Brea Junior High. Auditions will begin at 3:10 and will take place every 10 minutes until 4:50. To schedule an audition, please email Mrs. Bartell at gbartell@bousd.us no later than Friday, June 1.** Students who are accepted into the Concert Band will be informed no later than one week later than the audition, and names of students will be sent to the counselors so they can be placed in Concert Band rather than Intermediate Band. No schedule changes should be necessary in the beginning of the school year.

The required audition music consists of:

- Attached prepared piece
- Chromatic scale **in as wide a range as possible.**
- Scales to be chosen from Concert Bb, Eb, Ab, F, C, G major- see attached scale sheet (two will be chosen from these six at random, so be prepared for any of them). One octave is required; multiple octaves are optional but recommended where possible.
- Short sight-reading excerpt (no longer than 16 measures).

Please remember that it is impossible for every student to be accepted into Concert Band. The majority of the students that make up the class are usually eighth graders, though each year it includes several very talented seventh graders as well. **All students will be placed in the class in which they will learn the most and in which they will contribute most to the band.**

Students who are willing to switch to a less common instrument, such as French horn, oboe, bassoon, baritone, or tuba may have a better probability of being accepted to Concert Band, as we usually have overloads of instruments such as flutes and saxophones. Please contact Mrs. Bartell if you are willing to take the time to learn a new instrument. However, an audition on the student's primary instrument will still be required before any decisions are made.

In all cases, private lessons are strongly recommended for students to progress rapidly on their instruments. Contact Mrs. Bartell for more information regarding private tutors or recommendations.

Questions? Comments? Contact Glenda Bartell at (714) 990-7500 ext. 214 OR by email at gbartell@bousd.us.

I'm looking forward to having you in band next year! Good luck on your audition!

Horn in F

BJH Concert Band
Even-Year Audition Material
Variations 1-3 required, 4-5 bonus!

BJ Brooks
ASCAP

Moderato $\text{♩} = 80$ (suggested)
Theme

8 Variation 1

13 Variation 2

18 Variation 3

22

26 Variation 4

30 Variation 5

35

Appendix

One Octave Scales & Arpeggios

In All Twelve Major Key Signatures

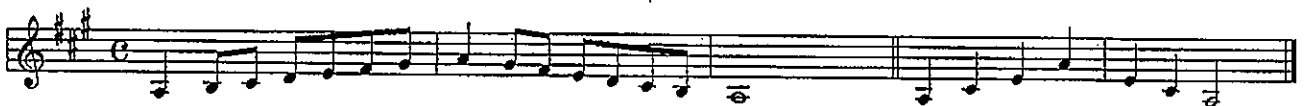
F.H.N.
Required
Scales
Circled

B/F 

F/C 

C/G 

G/D 

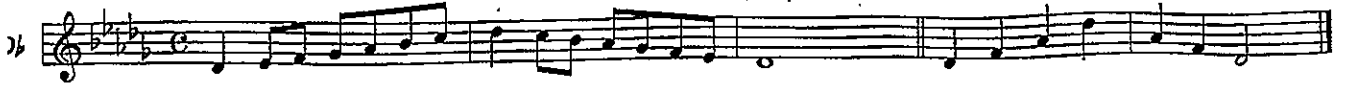
D/A 

A/E 

E/B 

B/F# 

B/G# 



Chromatic Exercises



F Chromatic Scale (Concert B-flat)



C Chromatic Scale (Concert F)



Full Range Major Scales

BONUS!

1 F Major (Concert Bb Major)

Musical notation for F Major (Concert Bb Major). The first measure is circled with the number '1'. The scale is written in treble clef with a key signature of two flats (Bb and Eb) and a 4/4 time signature. The second system includes an Arpeggio exercise consisting of three measures of eighth-note triplets.

2 Bb Major (Concert Eb Major)

Musical notation for Bb Major (Concert Eb Major). The first measure is circled with the number '2'. The scale is written in treble clef with a key signature of three flats (Bb, Eb, and Ab) and a 4/4 time signature. The second system includes an Arpeggio exercise consisting of three measures of eighth-note triplets.

2a Bb Major (Concert Eb Major) BONUS

Musical notation for Bb Major (Concert Eb Major) BONUS. The first measure is circled with the number '2a'. The scale is written in treble clef with a key signature of three flats (Bb, Eb, and Ab) and a 4/4 time signature. The second system includes an Arpeggio exercise consisting of three measures of eighth-note triplets.

3 Eb Major (Concert Ab Major)

Musical notation for Eb Major (Concert Ab Major). The first measure is circled with the number '3'. The scale is written in treble clef with a key signature of four flats (Bb, Eb, Ab, and Db) and a 4/4 time signature. The second system includes an Arpeggio exercise consisting of three measures of eighth-note triplets.

3a Eb Major (Concert Ab Major) BONUS

Musical notation for Eb Major (Concert Ab Major) BONUS. The first measure is circled with the number '3a'. The scale is written in treble clef with a key signature of four flats (Bb, Eb, Ab, and Db) and a 4/4 time signature. The second system includes an Arpeggio exercise consisting of three measures of eighth-note triplets.

4 Ab Major (Concert Db/C# Major)

Musical notation for Ab Major (Concert Db/C# Major). The first measure is circled with the number '4'. The scale is written in treble clef with a key signature of five flats (Bb, Eb, Ab, Db, and Gb) and a 4/4 time signature. The second system includes an Arpeggio exercise consisting of three measures of eighth-note triplets.

4a Ab Major (Concert Db/C# Major) BONUS

Musical notation for Ab Major (Concert Db/C# Major) BONUS. The first measure is circled with the number '4a'. The scale is written in treble clef with a key signature of five flats (Bb, Eb, Ab, Db, and Gb) and a 4/4 time signature. The second system includes an Arpeggio exercise consisting of three measures of eighth-note triplets.

5 Db Major (Concert Gb/F# Major)

Musical notation for Db Major (Concert Gb/F# Major). The first measure is circled with the number '5'. The scale is written in treble clef with a key signature of six flats (Bb, Eb, Ab, Db, Gb, and Cb) and a 4/4 time signature. The second system includes an Arpeggio exercise consisting of three measures of eighth-note triplets.

Db Major (Concert Gb/F# Major) BONUS

5a

C# Major - enharmonic to Db Major (Concert Gb/F# Major)

5b

C# Major - enharmonic to Db Major (Concert Gb/F# Major) BONUS

5c

Gb Major (Concert B Major)

6

Gb Major (Concert B Major) BONUS

6a

F# Major - enharmonic to Gb Major (Concert B Major)

6b

F# Major - enharmonic to Gb Major (Concert B Major) BONUS

6c

B Major - (Concert E Major)

7

B Major (Concert E Major) BONUS

7a

Arpeggio 3

E Major - (Concert A Major)

8

Arpeggio 3

E Major (Concert A Major) BONUS

8a

Arpeggio 3

A Major - (Concert D Major)

9

Arpeggio 3

A Major (Concert D Major) BONUS

9a

Arpeggio 3

D Major - (Concert G Major)

10

Arpeggio 3

D Major (Concert G Major) BONUS

10a

Arpeggio 3

G Major - (Concert C Major)

11

Arpeggio 3

G Major (Concert C Major) BONUS

11a

Arpeggio
3

C Major - (Concert F Major)

12

Arpeggio
3

C Major (Concert F Major) BONUS

12a

Arpeggio
3

C Major (Concert F Major) BONUS 2

12b

Arpeggio
3

F Chromatic Scale - One Octave

13

3

Chromatic Scale - Full Range

14

3

Chromatic Scale - Extended Full Range - BONUS

14a

3