

Flute

Concert Band Auditions 2019-2020 School Year Audition Information

All students entering Brea Junior High School for the 2019-20 school year who have musical experience are welcome to audition for BJH's top instrumental group, Concert Band. The Concert Band represents the most advanced musicians at the school and students involved will participate in many concerts, competitions, and other events throughout the school year. **Auditions will take place Monday, June 3 through Thursday, June 6 in the music room at Brea Junior High. Auditions will begin at 3:10 and will take place every 10 minutes until 4:50. To schedule an audition, please email Mrs. Bartell at gbartell@bousd.us no later than Friday, May 31.** Students who are accepted into the Concert Band will be informed no later than one week later than the audition, and names of students will be sent to the counselors so they can be placed in Concert Band rather than Intermediate Band. No schedule changes should be necessary in the beginning of the school year.

The required audition music consists of:

- Attached prepared piece
- Chromatic scale **in as wide a range as possible.**
- Scales to be chosen from Concert Bb, Eb, Ab, F, C, G major- see attached scale sheet (two will be chosen from these six at random, so be prepared for any of them). One octave is required; multiple octaves are optional but recommended where possible.
- Short sight-reading excerpt (no longer than 16 measures).

Please remember that it is impossible for every student to be accepted into Concert Band. The majority of the students that make up the class are usually eighth graders, though each year it includes several very talented seventh graders as well. **All students will be placed in the class in which they will learn the most and in which they will contribute most to the band.**

Students who are willing to switch to a less common instrument, such as French horn, oboe, bassoon, baritone, or tuba may have a better probability of being accepted to Concert Band, as we usually have overloads of instruments such as flutes and saxophones. Please contact Mrs. Bartell if you are willing to take the time to learn a new instrument. However, an audition on the student's primary instrument will still be required before any decisions are made.

In all cases, private lessons are strongly recommended for students to progress rapidly on their instruments. Contact Mrs. Bartell for more information regarding private tutors or recommendations.

Questions? Comments? Contact Glenda Bartell at (714) 990-7500 ext. 214 OR by email at gbartell@bousd.us.

I'm looking forward to having you in band next year! Good luck on your audition!

Theme and variation #1-2 required, variation #3-4 bonus

Flute

B JH Odd-Year Audition Material

play to the end of the variation (double barline) with which you are most comfortable

BJ Brooks, ASCAP

percussion by Susan Martin Tariq

Moderato $\text{♩} = 80$ (suggested)
Theme

mf

9 Variation 1

p mf

13

mf

17 Variation 2

p mp mf

21

p mp mf

25 Variation 3

f p f

29

p f

33 Variation 4

mf

38

mf

One Octave Scales & Arpeggios

In All Twelve Major Key Signatures

Fl.
Required scales are circled

B \flat

F

C

G

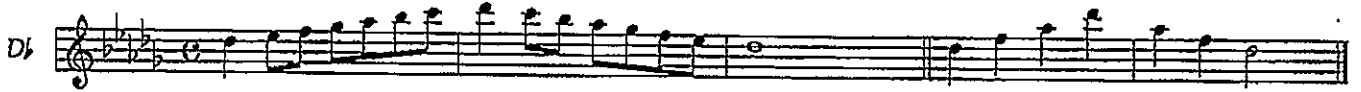
D

A

E

B

F#



Chromatic Exercises



Bb Chromatic Scale



F Chromatic Scale



Flute

BONUS POINTS!

Full Range Major Scales

Mrs. Bartell

1 Bb Major



Arpeggio



2 Eb Major



Arpeggio



3 Ab Major



Arpeggio



4 Db Major



Arpeggio



4a C# Major (enharmonic to Db Major)



Arpeggio



5 Concert Gb Major



Arpeggio



F# Major (enharmonic to Gb Major)

5a

6

B Major

6a

B Major - BONUS

6b

B Major - BONUS (for flutes with B foot only)

7

E Major

8

A Major

D Major

9

Musical notation for the first staff of D Major, starting with measure 9. The key signature has two sharps (F# and C#). The scale is written in a treble clef.

Arpeggio

Arpeggio

Musical notation for the arpeggiated version of the D Major scale, featuring triplets and an 8-measure rest.

G Major

10

Musical notation for the first staff of G Major, starting with measure 10. The key signature has one sharp (F#). The scale is written in a treble clef.

Arpeggio

Arpeggio

Musical notation for the arpeggiated version of the G Major scale, featuring triplets.

C Major

11

Musical notation for the first staff of C Major, starting with measure 11. The key signature has no sharps or flats. The scale is written in a treble clef.

Arpeggio

Arpeggio

Musical notation for the arpeggiated version of the C Major scale, featuring triplets.

C Major - BONUS

11a

Musical notation for the first staff of C Major - BONUS, starting with measure 11a. The key signature has no sharps or flats. The scale is written in a treble clef.

Arpeggio

Arpeggio

Musical notation for the arpeggiated version of the C Major scale, featuring triplets.

F Major

12

Musical notation for the first staff of F Major, starting with measure 12. The key signature has one flat (Bb). The scale is written in a treble clef.

Arpeggio

Arpeggio

Musical notation for the arpeggiated version of the F Major scale, featuring triplets.

Bb Chromatic Scale - One Octave

13

Musical notation for the first staff of Bb Chromatic Scale - One Octave, starting with measure 13. The key signature has one flat (Bb). The scale is written in a treble clef.

Chromatic Scale - Full Range

14

This musical exercise consists of two staves. The first staff begins with a circled number '14' and contains a chromatic scale starting on G4, ascending through the treble clef to G5. The second staff continues the scale from G5 down to G3, ending with a fermata on the final G3 note.

Chromatic Scale - Extended Full Range - BONUS

14a

This musical exercise consists of three staves. The first staff begins with a circled number '14a' and contains a chromatic scale starting on G4, ascending through the treble clef to G5. The second staff continues the scale from G5 down to G3. The third staff continues the scale from G3 down to G2, ending with a fermata on the final G2 note.