

One Octave Scales & Arpeggios

In All Twelve Major Key Signatures

B \flat /C



Two musical staves for the B-flat/C key signature. The first staff shows an ascending one-octave scale starting on C4. The second staff shows a descending one-octave scale ending on C4. The time signature is common time (C).

F/G



Two musical staves for the F/G key signature. The first staff shows an ascending one-octave scale starting on G4. The second staff shows a descending one-octave scale ending on G4. The time signature is common time (C).

C/D



Two musical staves for the C/D key signature. The first staff shows an ascending one-octave scale starting on D4. The second staff shows a descending one-octave scale ending on D4. The time signature is common time (C).

G/A



Two musical staves for the G/A key signature. The first staff shows an ascending one-octave scale starting on A4. The second staff shows a descending one-octave scale ending on A4. The time signature is common time (C).

D/E



Two musical staves for the D/E key signature. The first staff shows an ascending one-octave scale starting on E4. The second staff shows a descending one-octave scale ending on E4. The time signature is common time (C).

A/B



Two musical staves for the A/B key signature. The first staff shows an ascending one-octave scale starting on B4. The second staff shows a descending one-octave scale ending on B4. The time signature is common time (C).

E/F \sharp



Two musical staves for the E/F-sharp key signature. The first staff shows an ascending one-octave scale starting on F-sharp4. The second staff shows a descending one-octave scale ending on F-sharp4. The time signature is common time (C).

E/G \flat

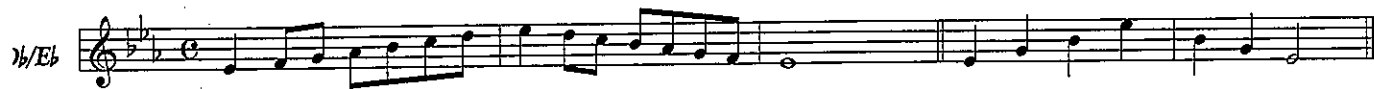


Two musical staves for the E/G-flat key signature. The first staff shows an ascending one-octave scale starting on G-flat4. The second staff shows a descending one-octave scale ending on G-flat4. The time signature is common time (C).

B \flat /D \flat



Two musical staves for the B-flat/D-flat key signature. The first staff shows an ascending one-octave scale starting on D-flat4. The second staff shows a descending one-octave scale ending on D-flat4. The time signature is common time (C).



Chromatic Exercises



C Chromatic Scale (Concert Bb)



G Chromatic Scale (Concert F)

