

Theme and variation #1-2 required
Variation #3-4 bonus

Alto/Bari
Sax

Concert Band Auditions 2019-2020 School Year Audition Information

All students entering Brea Junior High School for the 2019-20 school year who have musical experience are welcome to audition for BJH's top instrumental group, Concert Band. The Concert Band represents the most advanced musicians at the school and students involved will participate in many concerts, competitions, and other events throughout the school year. **Auditions will take place Monday, June 3 through Thursday, June 6 in the music room at Brea Junior High. Auditions will begin at 3:10 and will take place every 10 minutes until 4:50. To schedule an audition, please email Mrs. Bartell at gbartell@bousd.us no later than Friday, May 31.** Students who are accepted into the Concert Band will be informed no later than one week later than the audition, and names of students will be sent to the counselors so they can be placed in Concert Band rather than Intermediate Band. No schedule changes should be necessary in the beginning of the school year.

The required audition music consists of:

- Attached prepared piece
- Chromatic scale **in as wide a range as possible.**
- Scales to be chosen from Concert Bb, Eb, Ab, F, C, G major- see attached scale sheet (two will be chosen from these six at random, so be prepared for any of them). One octave is required; multiple octaves are optional but recommended where possible.
- Short sight-reading excerpt (no longer than 16 measures).

Please remember that it is impossible for every student to be accepted into Concert Band. The majority of the students that make up the class are usually eighth graders, though each year it includes several very talented seventh graders as well. **All students will be placed in the class in which they will learn the most and in which they will contribute most to the band.**

Students who are willing to switch to a less common instrument, such as French horn, oboe, bassoon, baritone, or tuba may have a better probability of being accepted to Concert Band, as we usually have overloads of instruments such as flutes and saxophones. Please contact Mrs. Bartell if you are willing to take the time to learn a new instrument. However, an audition on the student's primary instrument will still be required before any decisions are made.

In all cases, private lessons are strongly recommended for students to progress rapidly on their instruments. Contact Mrs. Bartell for more information regarding private tutors or recommendations.

Questions? Comments? Contact Glenda Bartell at (714) 990-7500 ext. 214 OR by email at gbartell@bousd.us.

I'm looking forward to having you in band next year! Good luck on your audition!

Alto Saxophone

β JH Odd-Year Audition Material

play to the end of the variation (double barline) with which you are most comfortable

BJ Brooks, ASCAP

percussion by Susan Martin Tariq

Moderato ♩=80 (suggested)
Theme

mf

9 Variation 1

p mf

13

mf

17 Variation 2

p mp mf

21

p mp mf

25 Variation 3

f p f

29

33 Variation 4

mf

38

One Octave Scales & Arpeggios

In All Twelve Major Key Signatures

A. Sax
Circled
scales are
required

B/W



Musical notation for the B/W scale in G major, starting on B4 and ending on B5. The scale is circled.

F/D



Musical notation for the F/D scale in D major, starting on F4 and ending on F5. The scale is circled.

C/A



Musical notation for the C/A scale in A major, starting on C4 and ending on C5. The scale is circled.

G/E



Musical notation for the G/E scale in E major, starting on G4 and ending on G5. The scale is circled.

D/B



Musical notation for the D/B scale in B major, starting on D4 and ending on D5.

A/F#



Musical notation for the A/F# scale in F# major, starting on A4 and ending on A5.

A/Gb



Musical notation for the A/Gb scale in Gb major, starting on A4 and ending on A5.

E/D#

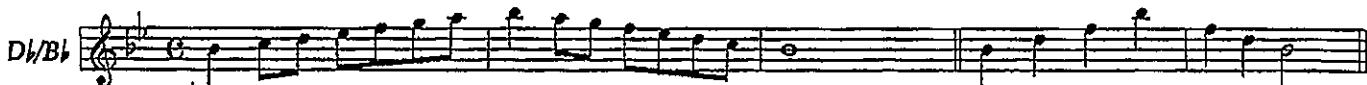
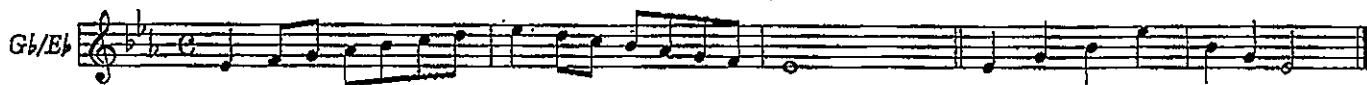


Musical notation for the E/D# scale in D# major, starting on E4 and ending on E5.

B/A#



Musical notation for the B/A# scale in A# major, starting on B4 and ending on B5.



Chromatic Exercises



G Chromatic Scale (Concert Bb)



D Chromatic Scale (Concert F)



Full Range Major Scales

BONUS!

Mrs. Bartell

1 G Major (Concert Bb Major) Arpeggio

The first staff shows the G Major scale (Concert Bb Major) in treble clef with a key signature of one sharp (F#). The scale is written in a single line. To the right, an arpeggio exercise is shown, consisting of two groups of three eighth notes each, with a '3' below each group.

2 C Major (Concert Eb Major)

The second staff shows the C Major scale (Concert Eb Major) in treble clef with a key signature of no sharps or flats. The scale is written in a single line.

Arpeggio

An arpeggio exercise for C Major, consisting of two groups of three eighth notes each, with a '3' below each group.

3 F Major (Concert Ab Major) Arpeggio

The third staff shows the F Major scale (Concert Ab Major) in treble clef with a key signature of one flat (Bb). The scale is written in a single line. To the right, an arpeggio exercise is shown, consisting of two groups of three eighth notes each, with a '3' below each group.

3a F Major (Concert Ab Major) BONUS

The fourth staff shows the F Major scale (Concert Ab Major) in treble clef with a key signature of one flat (Bb). The scale is written in a single line.

Arpeggio

An arpeggio exercise for F Major, consisting of two groups of three eighth notes each, with a '3' below each group.

4 Bb Major (Concert Db/C# Major)

The fifth staff shows the Bb Major scale (Concert Db/C# Major) in treble clef with a key signature of two flats (Bb, Eb). The scale is written in a single line.

Arpeggio

An arpeggio exercise for Bb Major, consisting of two groups of three eighth notes each, with a '3' below each group.

5 Eb Major (Concert Gb/F# Major) Arpeggio

The sixth staff shows the Eb Major scale (Concert Gb/F# Major) in treble clef with a key signature of three flats (Bb, Eb, Ab). The scale is written in a single line. To the right, an arpeggio exercise is shown, consisting of two groups of three eighth notes each, with a '3' below each group.

5a Eb Major (Concert Gb/F# Major) BONUS

The seventh staff shows the Eb Major scale (Concert Gb/F# Major) in treble clef with a key signature of three flats (Bb, Eb, Ab). The scale is written in a single line.

Arpeggio

An arpeggio exercise for Eb Major, consisting of two groups of three eighth notes each, with a '3' below each group.

6 Ab Major (Concert B Major) Arpeggio

The eighth staff shows the Ab Major scale (Concert B Major) in treble clef with a key signature of four flats (Bb, Eb, Ab, Db). The scale is written in a single line. To the right, an arpeggio exercise is shown, consisting of two groups of three eighth notes each, with a '3' below each group.

C# Major (Concert E Major)

7

Arpeggio

Db Major - Enharmonic to C# Major (Concert E Major)

7a

Arpeggio

F# Major (Concert A Major)

8

Arpeggio

3

3

3

Gb Major - Enharmonic to F# Major (Concert A Major)

8a

Arpeggio

3

3

3

B Major (Concert D Major)

9

Arpeggio

3

E Major (Concert G Major)

10

Arpeggio

3

3

3

E Major (Concert G Major) BONUS

10a

Arpeggio

3

A Major (Concert C Major)

11

Arpeggio

3

3

3

D Major (Concert F Major)

12

Arpeggio

G Chromatic Scale (Concert Bb) - One Octave

13

Chromatic Scale - Full Range

14

Chromatic Scale - Extended Full Range - BONUS

14a